

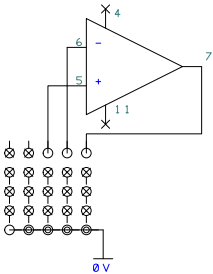
Note: Jumpers shown in RED are the default, and are tracks on the PCB. To re-jumper, cut the existing tracks first.



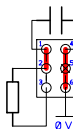
Jumper positions for Non-inverting amplifier mode.



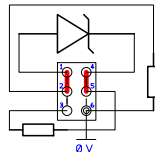
Jumper positions for Inverting amplifier mode.



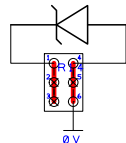
Voltage divider. Useful when input is more than 0-10V



RC Input Filter. Useful when signals are not very stable.



Suppressed-Zero Voltage divider. Useful to measure small changes superimposed on a bias eg 20-30V



Zener Clamp. Help protect against inputs over 10V

